

MICRO SWITCH

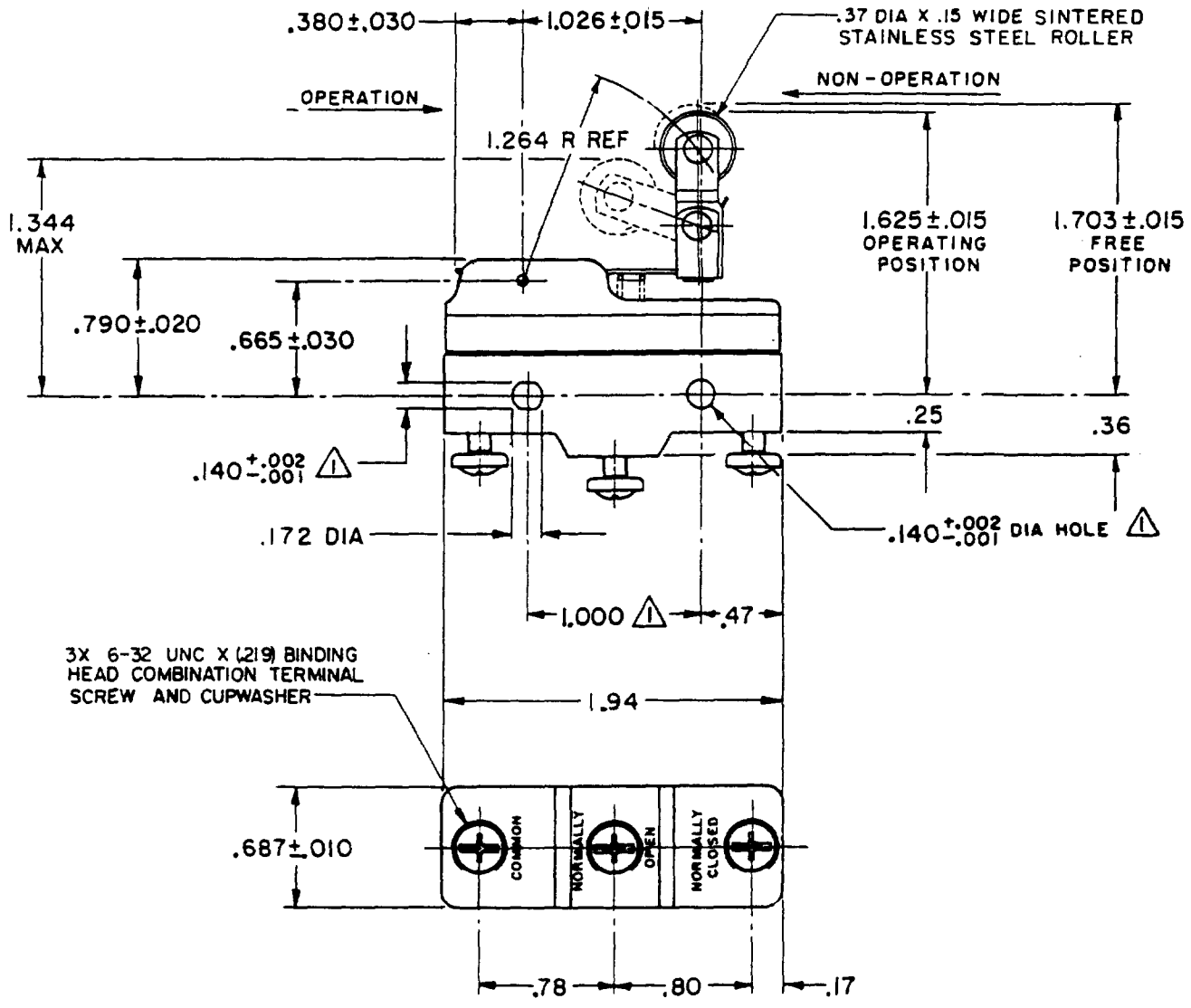
A DIVISION OF MINNEAPOLIS-HONEYWELL REGULATOR COMPANY
ROSBURY, MASSACHUSETTS

SWITCH - BASIC

CATALOG LISTING
BZ-2RW826-A2

FED. MFR. CODE 91929

M BZ-2RW826-A2
 PAGE 1 OF 1
 DRAWING NUMBER
 ISSUE 8
 REVISIONS
 A CO 16736
 GCH 14 JUNE 62
 B C034306
 DBW 24 JUL 75
 C CO-73287-B
 DHD 19 MAY 93
 D CO-75204-B
 I WJC FEB 94
 E CO-77589
 MAM 29 MAR 91
 F C093346
 DLT 14 SEP 98
 FORMTEK
 P.O. 50378
 GCH 14 JUNE 62
 DRAWN
 CHECK
 21 SEPT 62
 DAW
 CHECK
 14 JUNE 62
 RELEASE NO.
 CHECK
 REPLACES



THIS DRAWING COVERS A PROPRIETARY ITEM AND IS THE PROPERTY OF MICRO SWITCH, A DIVISION OF MINNEAPOLIS-HONEYWELL REGULATOR CO. THIS DRAWING IS NOT TO BE COPIED OR USED WITHOUT THE APPROVAL OF MICRO SWITCH.

| CHARACTERISTICS | ELECTRICAL DATA | SCALE FULL |
|-------------------------------------|--|---|
| OPERATING FORCE ----- 6 OZ MAX | CONTACT ARRANGEMENT S P D T | DO NOT SCALE PRINT |
| RELEASE FORCE ----- 1 1/2 OZ MIN | UNDERWRITERS' LAB. INC. LISTED RATING -L96- 15 A-125, 250, OR 480 VAC 1/2 A-125 VDC; 1/4 A-250 VDC 1/8 HP-125 VAC; 1/4 HP-250 VAC -L288- -L299- -L306- | UNLESS OTHERWISE SPECIFIED DIMENSIONS ARE IN INCHES |
| DIFFERENTIAL TRAVEL ----- .003-.020 | | TOLERANCES ARE: ONE PLACE (.0) ± .030 TWO PLACE (.00) ± .015 THREE PLACE (.000) ± .005 ANGLES ± |
| OVERTRAVEL ----- .094 MIN | | CE D SP 16A 250V ~ T85 5E4 |
| | | WEIGHT |